



# USER GUIDE

## Silt STOPPER Installation

E: [contact@silt-stoppers.co.uk](mailto:contact@silt-stoppers.co.uk)  
T: 01562 744788

**Date of Publication**  
November 2025



# STEP BY STEP INSTALLATION

Silt STOPPER is designed for installation during the construction phase to effectively manage silt and sediment. When installed properly, it can be reused for multiple future projects.

To ensure optimal performance and compliance with safety standards, all personnel involved in the installation process must strictly adhere to the established site health and safety guidelines. This includes wearing appropriate personal protective equipment (PPE) and being aware of potential hazards associated with the construction environment.





1

Before placing the receptacle into the gully pot, apply a layer of mortar around the brickwork or concrete seating ring. Set the Silt STOPPER Gully Plate onto the mortar bed, ensuring the narrow side of the frame sits next to the kerb line. Add another layer on mortar on top of the plate. Place the grate on top of the Silt STOPPER plate and haunch around it firmly so the grate is stable and secure. Open grate and carefully lower Silt STOPPER Receptacle into the frame. Close grate to complete installation.



2

Allow the Silt STOPPER to collect debris and silt throughout the project duration. Perform regular inspections throughout the project and remove any debris throughout to ensure thorough drainage. Qualified personnel must conduct regular checks to empty the receptacle when necessary.



3

When the receptacle reaches its full capacity, it is essential to employ a crane forklift for its removal, as its weight may exceed safe handling limits. When raising ironworks to finished levels, both the Silt STOPPER and plate can be removed and relocated to the next site or another area of the project.

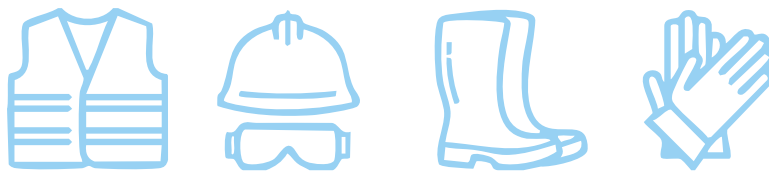
# SAFETY ADVICE

Please ensure these instructions and advice have been read thoroughly before installing the equipment.

If you have any concerns, please contact with Silt STOPPER with your enquiries.

A tailored Risk Assessment and lifting plan, if necessary, must be prepared by the designated individual prior to utilising the equipment. This step is crucial for managing risks, creating a safe working procedure, and safeguarding yourself, your coworkers, and others.

The risk assessment will identify the appropriate personal protective equipment (PPE) required for your task, and it is essential that it is worn if it has been specified.



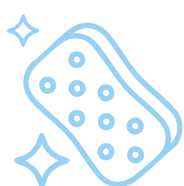
## ACCESSING THE GULLY POT

Carry out regular inspections to monitor silt levels in the silt STOPPER receptacle and empty before overflowing.



## STORING THE EQUIPMENT

Store equipment in a location that does not pose any potential hazards on the site.



## CLEANING

Prior to each use, please ensure that all equipment is thoroughly cleaned and completely empty. Taking these steps will help ensure optimal performance and safety during operation.



# TRANSPORTATION ADVICE

When containing debris, the equipment will become heavy and will not be suitable for manual lifting. In this cases, transportation and lifting of the equipment may involve a forklift, telehandler or excavator forks.

Ensure correct personnel are operating machinery/ vehicles before lifting and transporting.

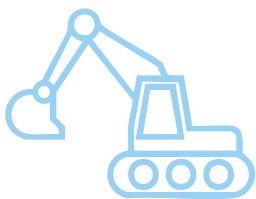
Take extra care in limited space and ensure the area is free from hazards and potential risks.

Keep the area clear of personnel while operating vehicles, including during lifting and lowering.



## TRANSPORTING WITH A FORKLIFT

Stack equipment on a secure, good-condition pallet. Check the forklift's load capacity and keep the forks low for stability and visibility. Clear the path of obstacles and watch for pedestrians. Drive safely, especially when turning, and use hand signals or radios to communicate with coworkers. Following these guidelines ensures a safe and efficient transport process.



## TRANSPORTING WITH AN EXCAVATOR

Ensure the lifting apparatus is attached correctly and not at risk of becoming a hazard.

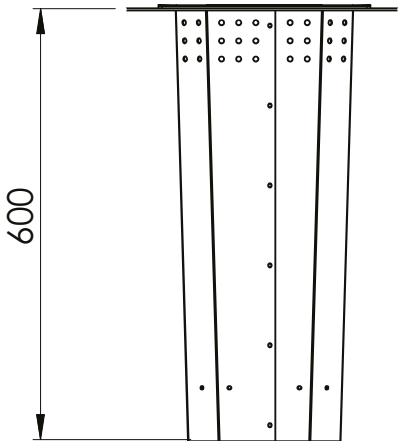
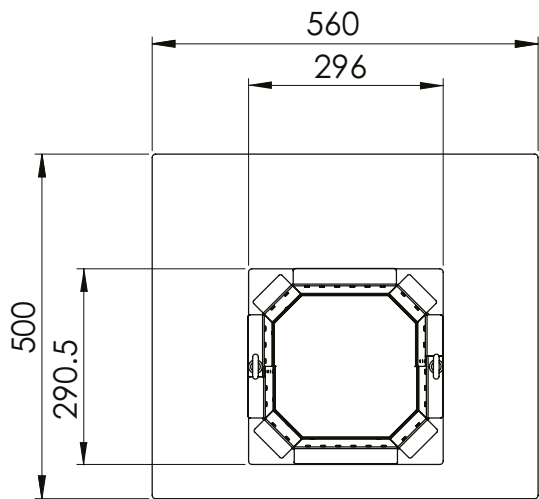
Attach the lifting apparatus to the silt STOPPER using a suitably rated, four-leg lifting chain.

# TECHNICAL DATA

- Silt STOPPER **kits** include 2 parts, receptacle and plate.
- Silt STOPPER Gully Plate fits both Silt STOPPER sizes.

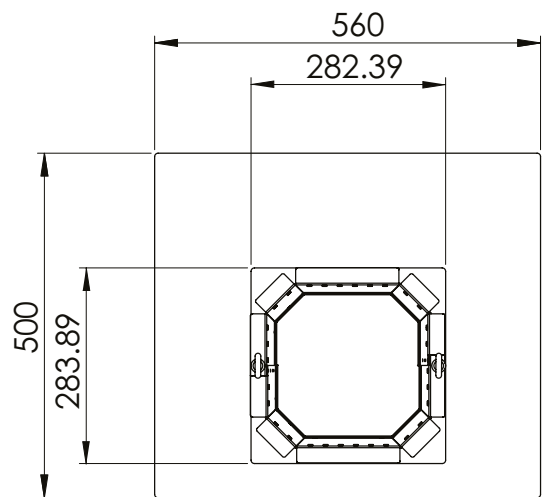
PRODUCT CODE	PRODUCT	DIMENSIONS	NO. OF PARTS
CPSS001	Silt STOPPER Drainage Protection Kit	292mm x 290.5mm x 600mm	2
CPSS002	Silt STOPPER MINI Drainage Protection Kit	283mm x 284mm x 400mm	2
CPSSRGP1	Silt STOPPER Gully Plate	500mm x 560mm	1
CPSSRGP2	Silt STOPPER MINI Gully Plate	500mm x 560mm	1

## Silt STOPPER Dimensions

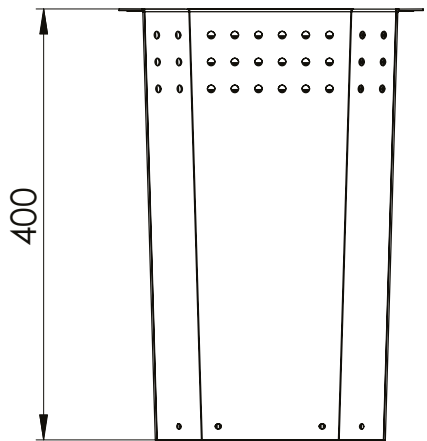


Silt STOPPER MINI Dimensions

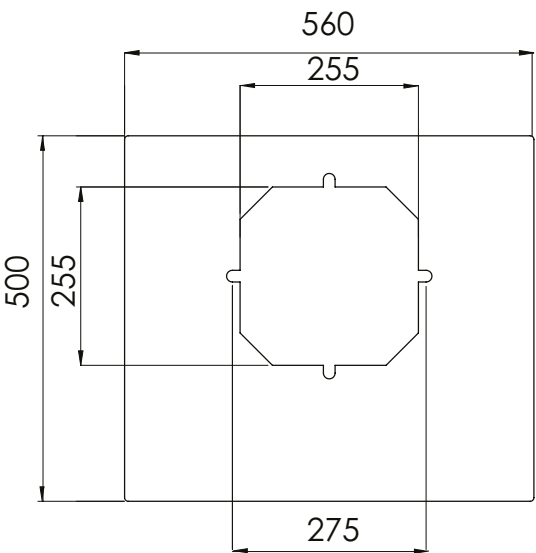
MINI



MINI

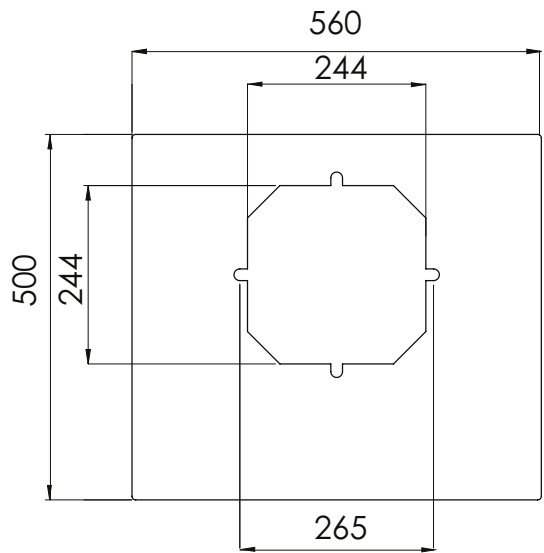


Gully Plate Dimensions



Gully Plate MINI Dimensions

MINI





[www.silt-stopper.co.uk](http://www.silt-stopper.co.uk)



[contact@silt-stoppers.co.uk](mailto:contact@silt-stoppers.co.uk)



01562 744788



@silt-stopper



@silt-stopper